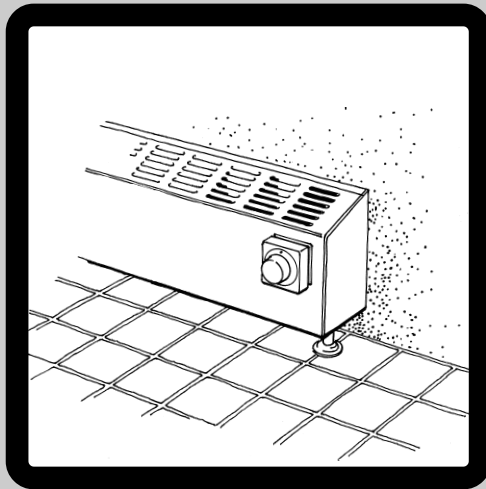
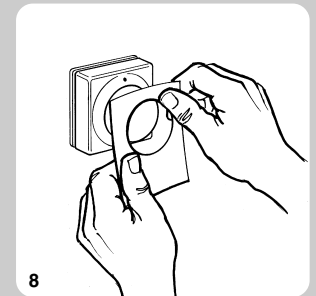
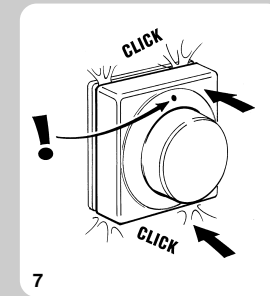
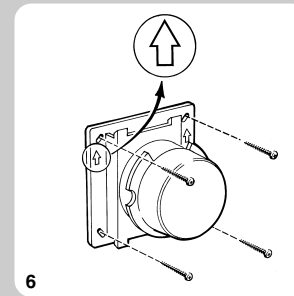
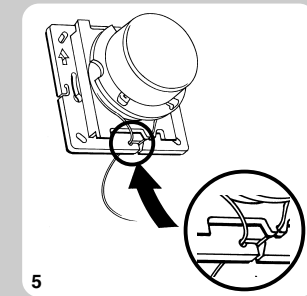
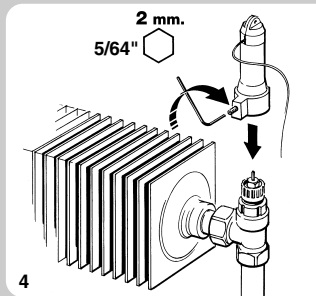
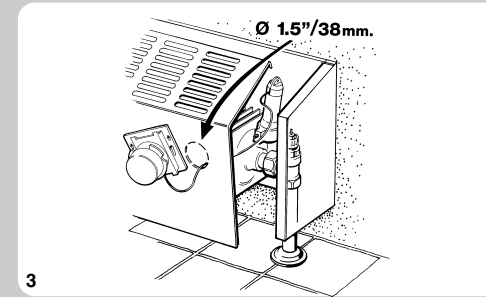
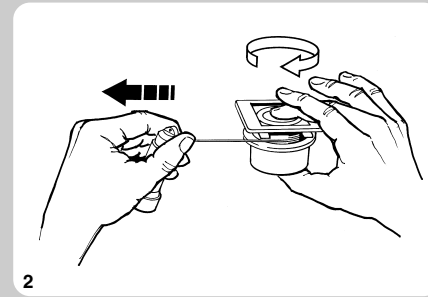
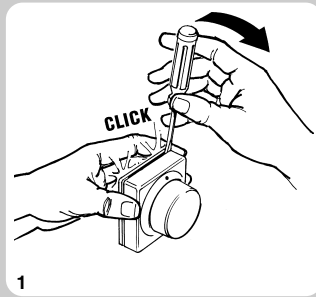


013FR9223

013FR9223



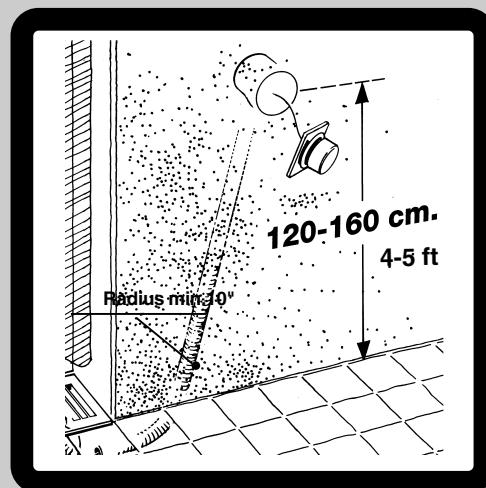
**Mounting on convector**  
with Danfoss RA 2000 valve



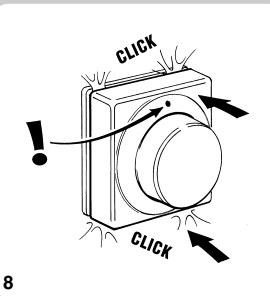
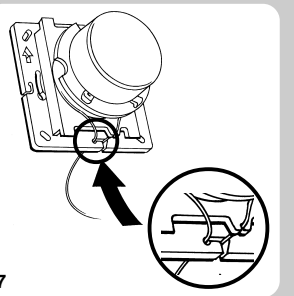
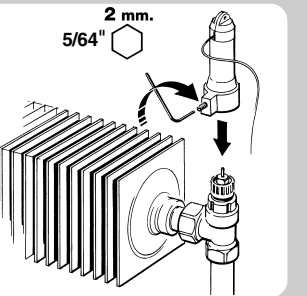
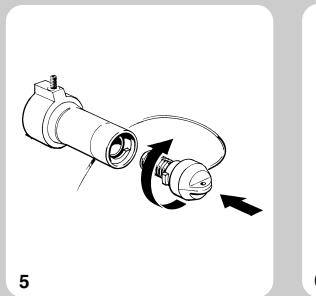
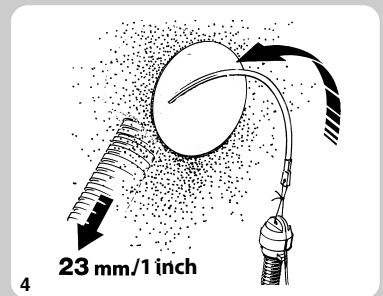
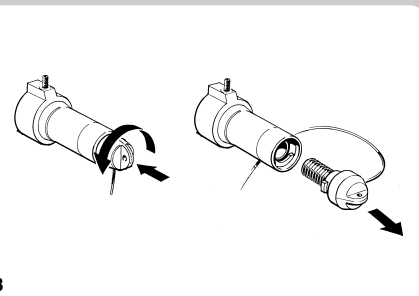
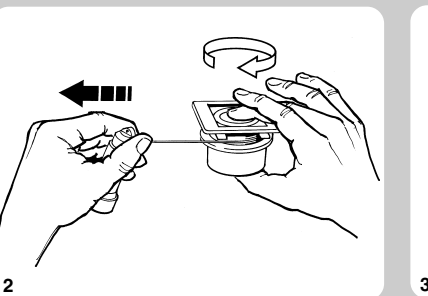
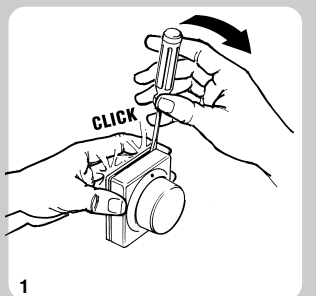
DANFOSS INC.  
7941 Corporate Drive,  
Baltimore MD 21236 USA  
tel: 410-512-0266

DANFOSS INC.  
6711 Mississauga Road, Suite 410  
Mississauga, ON, L5N 2W3 CANADA  
tel: 905-285-2050

[www.na.heating.danfoss.com](http://www.na.heating.danfoss.com)



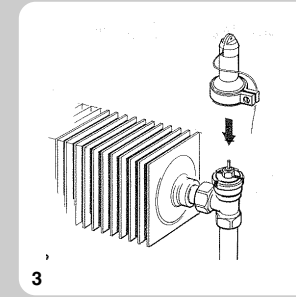
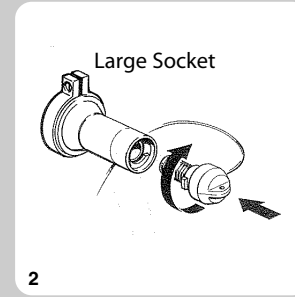
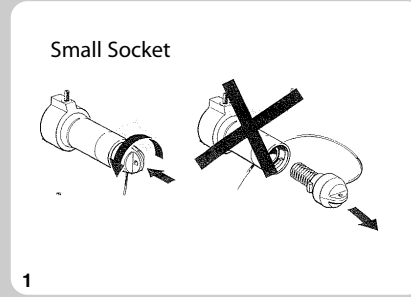
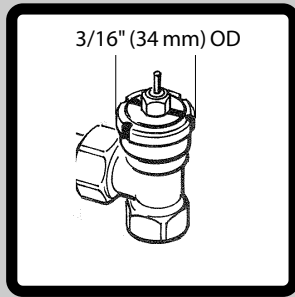
**Installing operator through conduit**  
with Danfoss RA 2000 valve



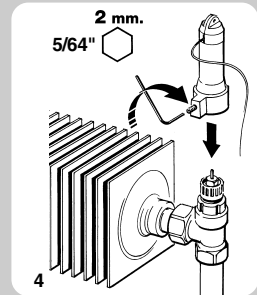
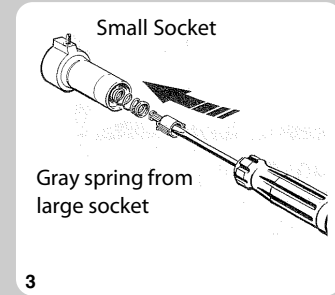
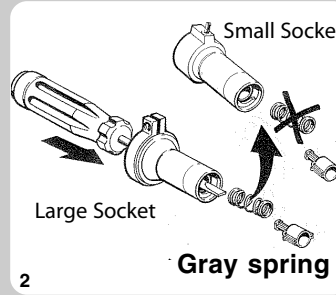
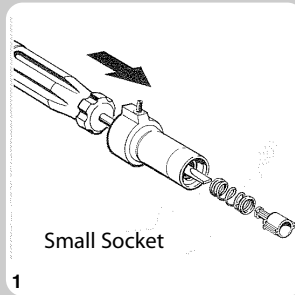
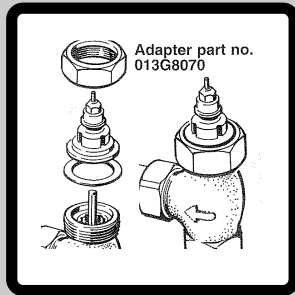


# INSTRUCTIONS

If this operator is being installed on a RAV, VMT or KOVM valve, it is necessary to replace the pre-attached small socket with the large socket included in product package. RAV/VMT/KOVM valves have a larger operator connection than RA 2000 valves.



If this operator unit is being installed on a RA valve fitted with a RA to RA 2000 adapter (013G8070), the socket spring must be replaced with the gray spring from the large socket included in the product package.



## Limiting and blocking the setting range

Upper limit setting (max. setting)

Lower limit setting (min. setting)

Locking setting is done by combining the upper & lower limiter settings

