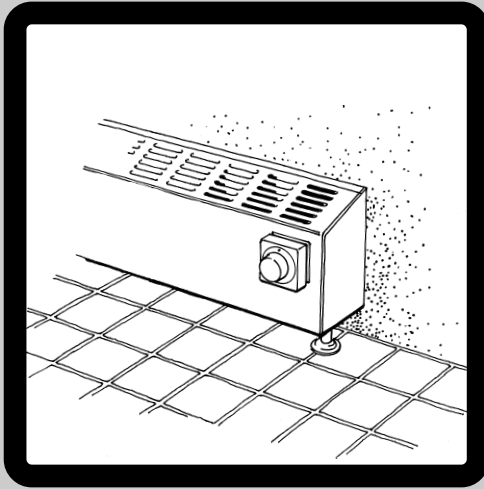
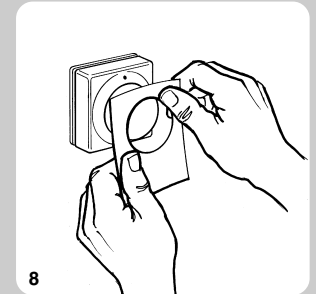
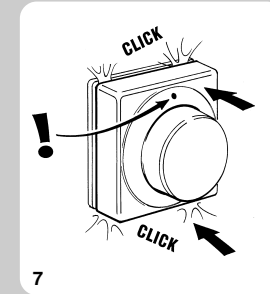
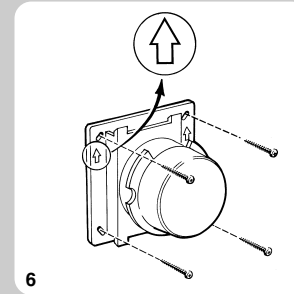
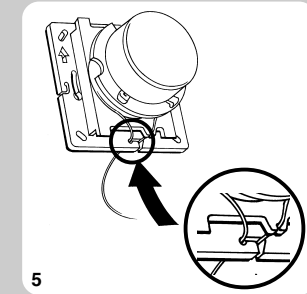
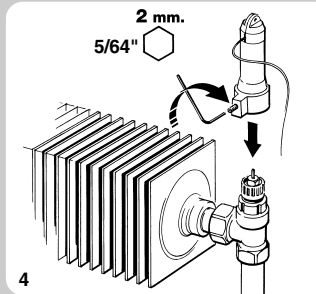
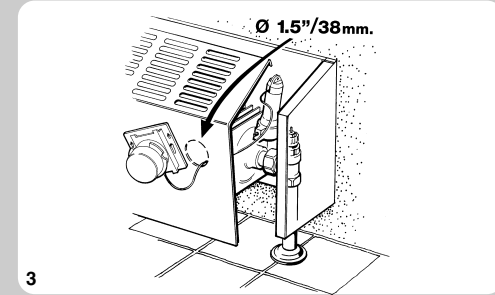
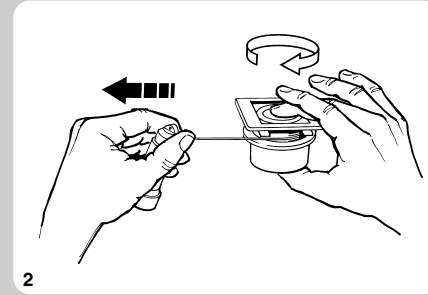
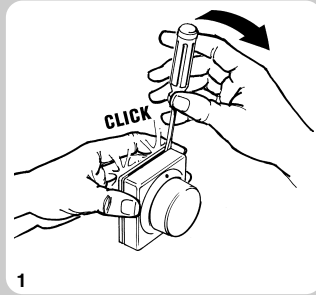


013FR9223

013FR9223



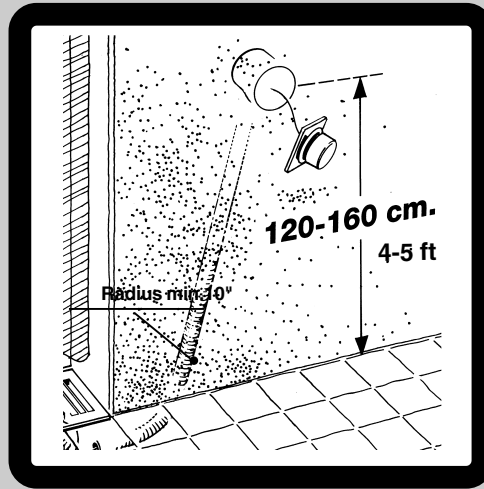
**Mounting on convector
with Danfoss RA 2000 valve**



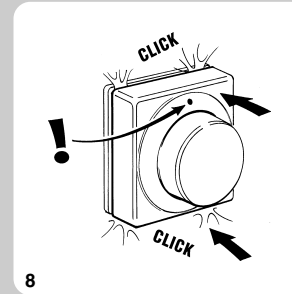
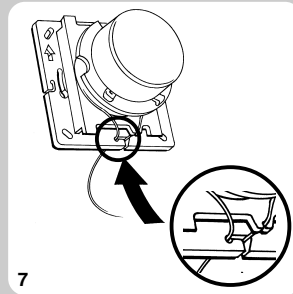
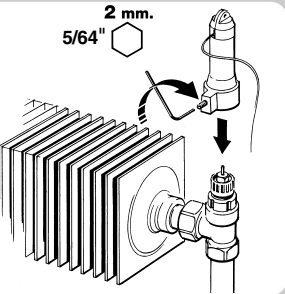
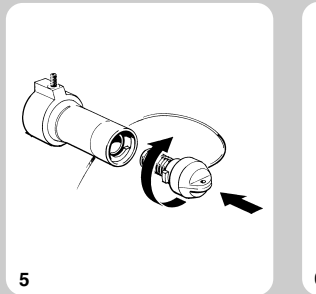
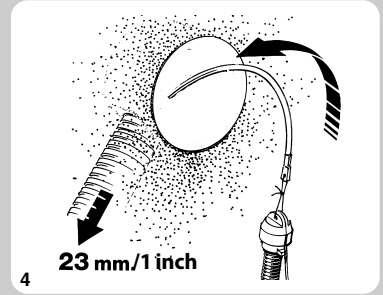
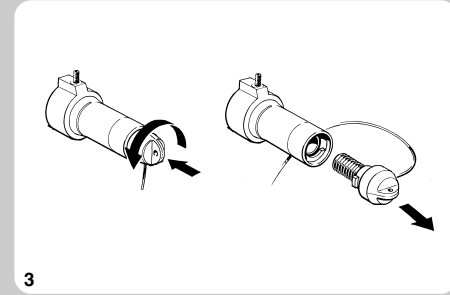
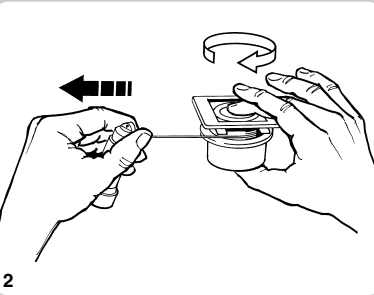
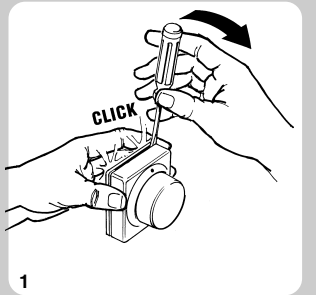
DANFOSS INC.
7941 Corporate Drive,
Baltimore MD 21236 USA
tel: 410-512-0266

DANFOSS INC.
6711 Mississauga Road, Suite 410
Mississauga, ON, L5N 2W3 CANADA
tel: 905-285-2050

www.na.heating.danfoss.com

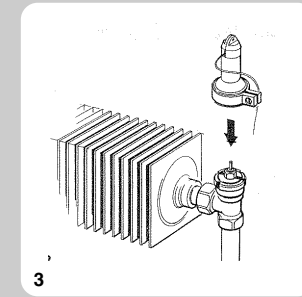
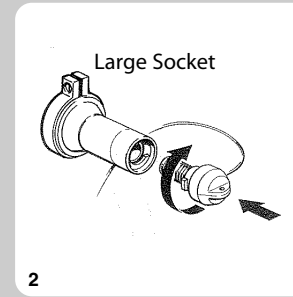
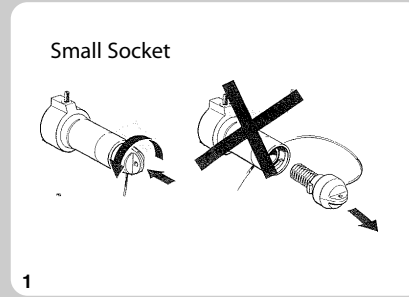
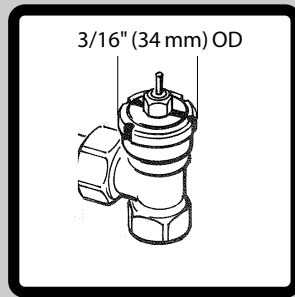


**Installing operator through
conduit
with Danfoss RA 2000 valve**

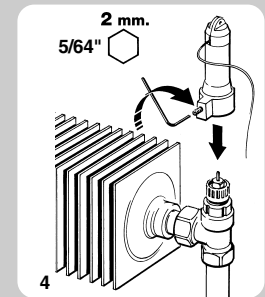
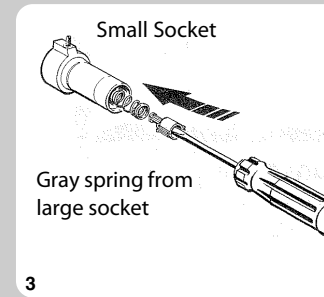
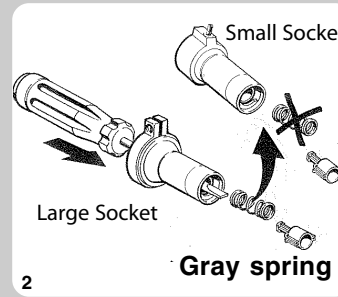
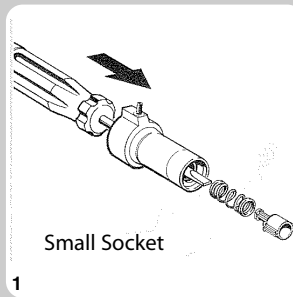
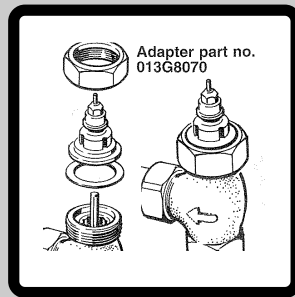


INSTRUCTIONS

If this operator is being installed on a RAV, VMT or KOVM valve, it is necessary to replace the pre-attached small socket with the large socket included in product package. RAV/VMT/KOVM valves have a larger operator connection than RA 2000 valves.



If this operator unit is being installed on a RA valve fitted with a RA to RA 2000 adapter (013G8070), the socket spring must be replaced with the gray spring from the large socket included in the product package.



Limiting and blocking the setting range

Upper limit setting (max. setting)

Lower limit setting (min. setting)

Locking setting is done by combining the upper & lower limiter settings

