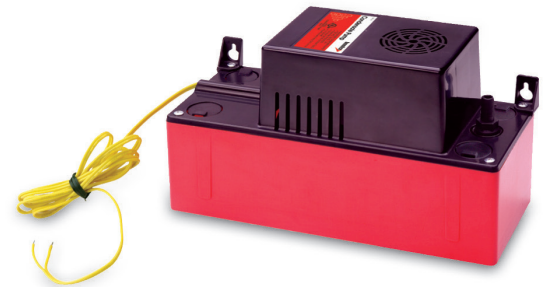
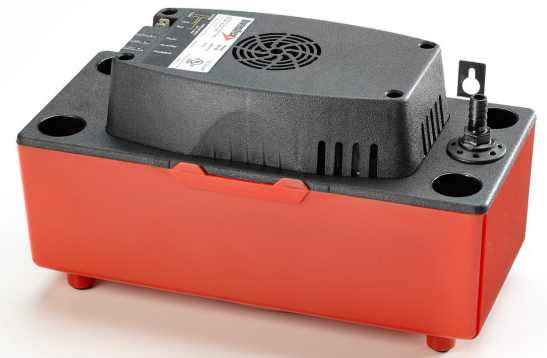


Specifications

Product	CP Series Condensate Pumps
Application	High efficiency furnaces and humidifiers
Purpose	This product is designed to automatically pump condensate produced by high efficiency boilers and humidifiers up to 22' vertically once the level of condensate in the tank reaches a specified level.
Advantages	DiversiTech CP-22 series pumps beat the industry standard of 20' lift height by 2 feet and come with innovative features such as: vibration dampening feet and motor mounts, metal hang tabs, four inlet holes (and 3 poly covers for the unused), LED indicators, float switch and duckbill-style check valve, plug protector, and detailed installation instructions. Two terminals are provided allowing the installer flexibility to connect air-handler shut-down - an important safety consideration. CP-22 is available with 20' of 3/8" tubing as well. Utilizing the same great features but in a low-height (4-3/8") design, the CP-22LP is great for tight spaces. If a smaller job is in order, the CP-16 is an economical alternative that's based off of the proven CP-22 design. more compact than the CP-22, it's designed to lift to a maximum of 16 feet. The CP-16 shares many of the great features of the CP-22, including hang tabs, four inlet holes, float switch, overflow switch, and a check valve.
Maximum Condensate Temperatures	<ul style="list-style-type: none"> • Continuous duty 140F° • Maximum inlet temperature 160F° • Not suitable for contact with steam or gasses that exceed 160F°
Rated Voltage	120 VAC / 230VAC / 60Hz
Rated Current Draw	<ul style="list-style-type: none"> • 1.9 Amps (120VAC) • 1.0 Amps (230VAC)
Input Type	<ul style="list-style-type: none"> • USA 3-prong molded plug (120VAC) • NEMA 6-15 plug (230VAC)
Maximum Lift Height	<ul style="list-style-type: none"> • CP-22 series: 22' • CP-16 series: 16' <p>(Every Diversitech condensate pump is computer tested to ensure excellent performance at all pumping levels.)</p>
Flow Rate @ Zero Head	<ul style="list-style-type: none"> • CP-22: 1.6 gallons per minute • CP-16: 1.2 gallons per minute
Dimensions	<ul style="list-style-type: none"> • CP-22: 11.8" x 5.9" x 6.7" (4.9"H low profile) • CP-16: 4.5" x 10.75" x 6.5" • CP-22: 5 lbs. (4.7 lbs. low profile) • CP-16: 3.8 lbs.
Inlet Height from Base	<ul style="list-style-type: none"> • CP-22: 4.4" (1.75" low profile) • CP-16: 3.5"
Tank Capacity	<ul style="list-style-type: none"> • CP-22: 1/2 gallon • CP-22LP: 3/8 gallon • CP-16: 2/5 gallon
Included Accessories	<ul style="list-style-type: none"> • Instruction Booklet • Metal Hang Tabs • Plug Protector • 4' Remote Shutoff Leads w/insulated terminals • Polyethelene inlet covers (3)
Wiring Color References	<ul style="list-style-type: none"> • 120V Black - Live/Hot White - Neutral Green - Ground (All installations must conform to NEC requirements) <ul style="list-style-type: none"> • 230V Brown - Live/Hot Blue - Live/Hot Green/Yellow - Ground (All installations must conform to NEC requirements)



Condensate Pumps

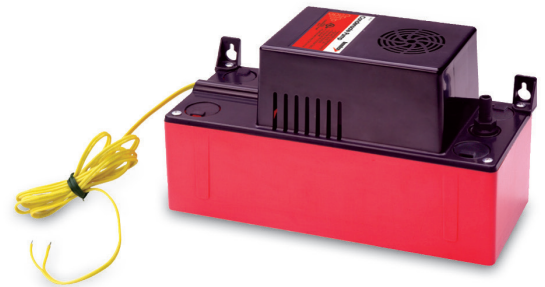
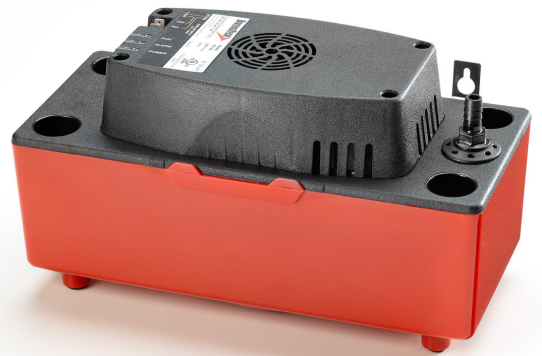
Package Metrics

Producer of Goods DiversiTech

Domestic/Foreign Commodity Foreign

SKU Specific Package Metrics

Catalog No.	Description	Lift	UPC	Order Multiple
CP-22	120V	22'	095247091263	6
CP-22T	120V w/tubing	22'	095247091287	6
CP-22-230	230V	22'	095247092994	6
CP-22-230T	230V w/tubing	22'	095247094578	6
CP-22LP	120V low profile	22'	095247094301	6
CP-22LP-230	230V low profile	22'	0095247131280	6
CP-16	120V	16'	095247123988	6
CP-16-230	230V	16'	095247130207	6



Condensate Pumps