



Easy Lineset Duct Kit

For mini splits and conventional split systems.

Available in 3" and 4" Sizes



99 Washington Street
Melrose, MA 02176
Phone 781-665-1400
Toll Free 1-800-517-8431

Visit us at www.TestEquipmentDepot.com

One Person Installation

Quick and easy for one person to install, for less time and labor costs!



Paintable

All the pieces in the Kit are a neutral cream color and can easily be painted.



Weather Resistant

Durable material can withstand almost any type of weather condition.



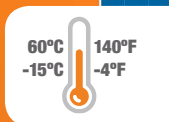
UV Resistant

Will not discolor or breakdown under long periods of direct sunlight.



Wide Temperature Range

Will not melt or crack in normal seasonal temperature extremes.



Easy Lineset Duct Kit

3"
80 mm

4"
110 mm

Easy to Install



• Snap Together / Quick and Easy

Every piece in this Duct Kit has been designed to fit together quickly and easily. Making your job a snap.

• Removable Protective Film

During installation the protective film will help keep your job safe from damage, and can later be easily removed.

• Flexible Installation Options

With an adjustable corner piece you have many line direction options available to you.

• Indoor or Outdoor Use

This Kit is attractive enough to use inside or outside the home.

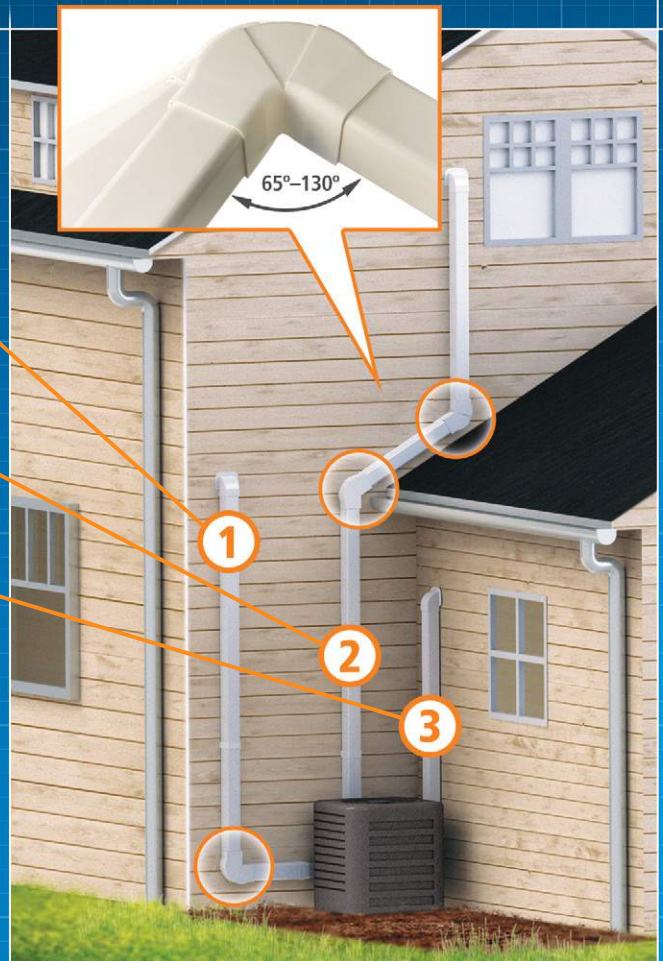
This flexible system meets all your needs!

- 1 One complete kit, fully utilized!**
With 11'3" of ducting you can reach most second floors. This run utilizes every piece in the Kit.
- 2 Only two kits needed to complete this run.**
You need two Duct Kits to complete this line and you'll have a few pieces left for the next job.
- 3 One kit used, with pieces to spare.**
Short lines are no problem. One easy to install Duct Kit is all you need for most simple runs.

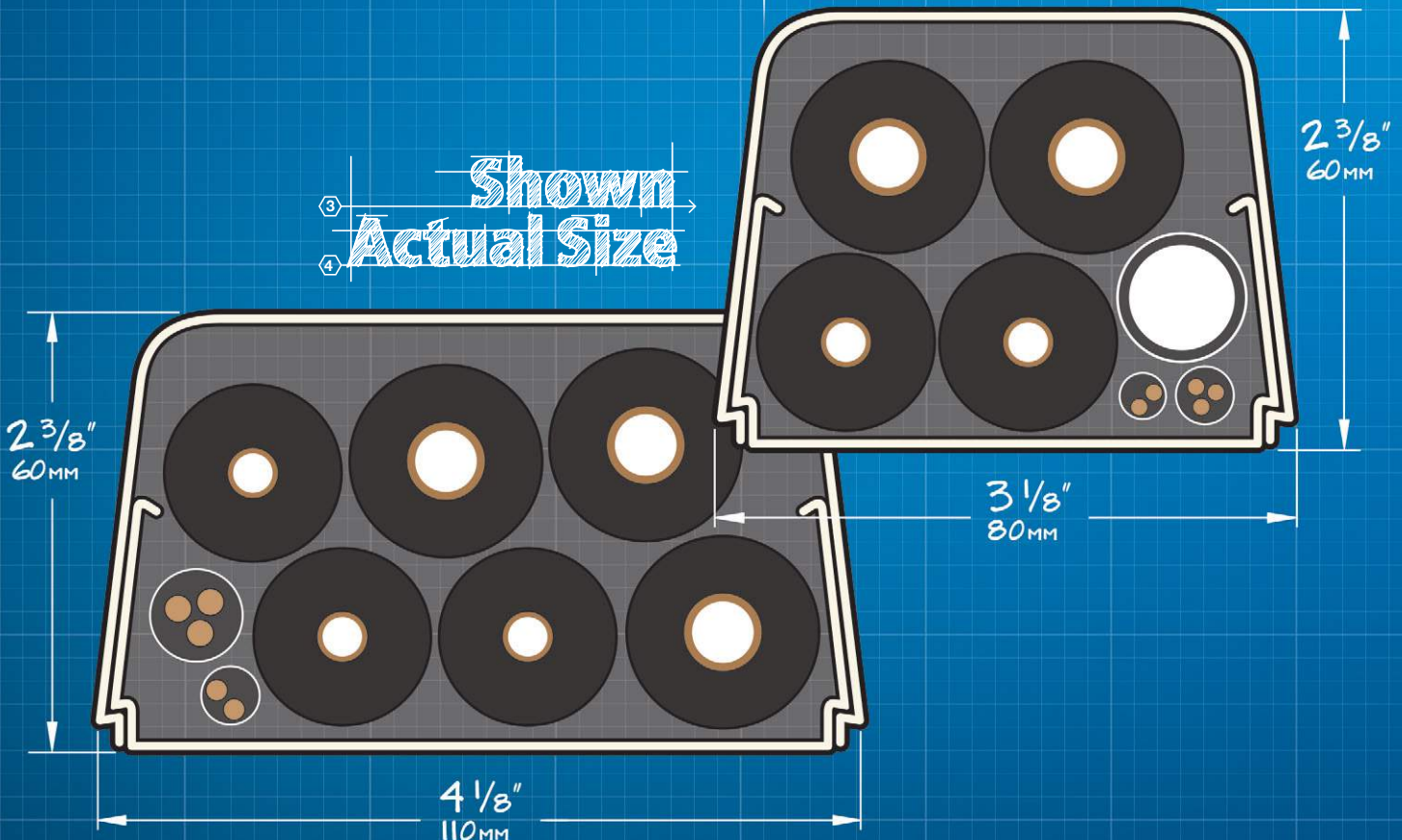


Protective film will help keep your job safe from surface damage.

Adjustable corner piece gives you many line direction options.

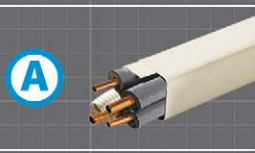
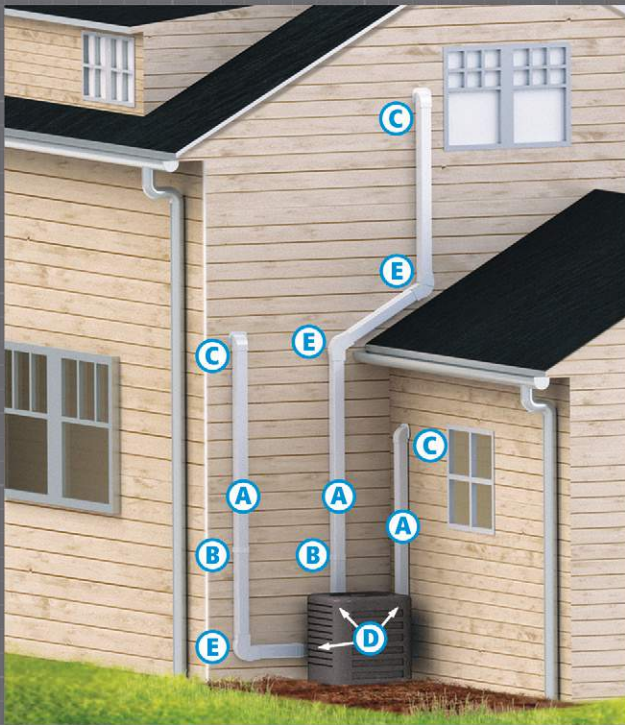
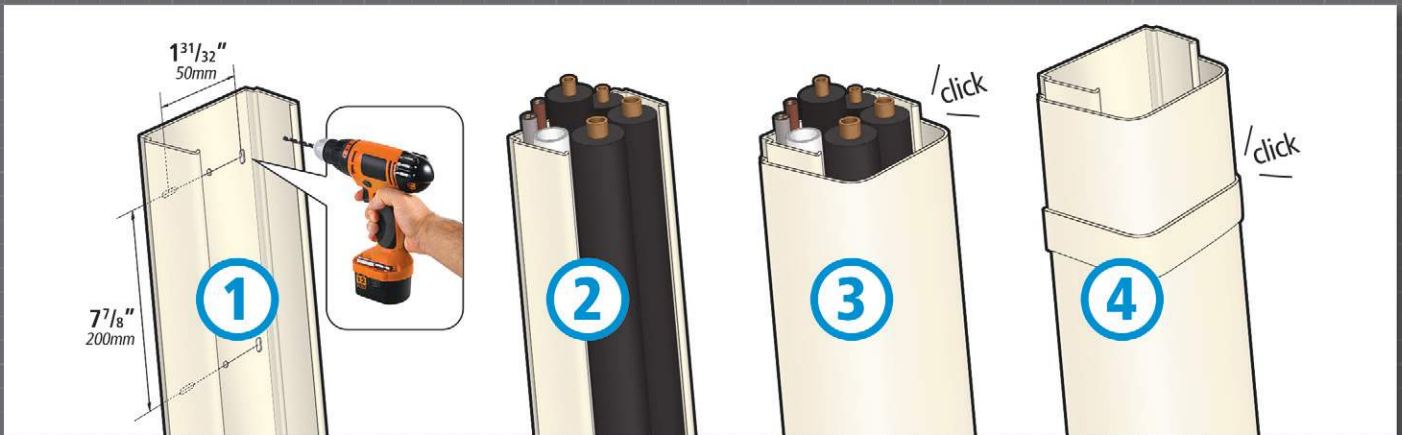
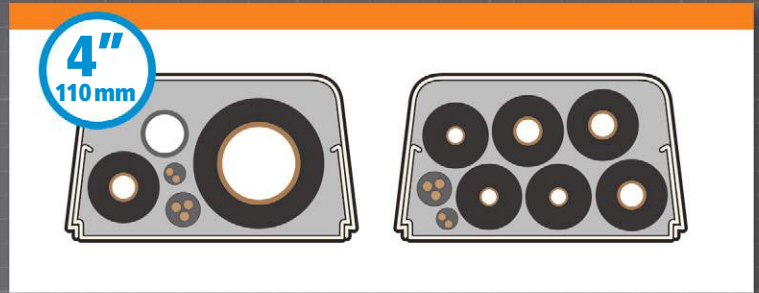
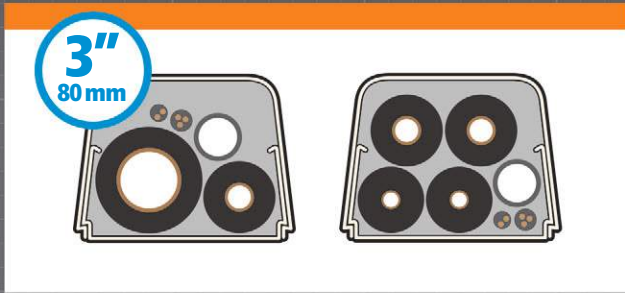


Shown
Actual Size



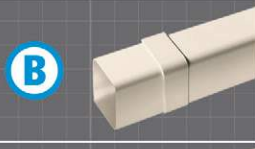
Easy Lineset Duct Kit

Available in 3" and 4" Sizes



Ducting

3 Cream colored pieces
 Each piece: 3'9" – 1.15m
 Total length: 11'3" – 3.45m



Coupler

2 Cream colored pieces
 Snaps on to hold 2 duct pieces together



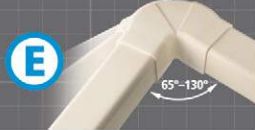
Wall Inlet

1 Cream colored piece
 Fits easily on the end of the duct pieces



End Fitting

1 Cream colored piece
 Fits easily on the end of the duct pieces



Adjustable Elbow

1 Cream colored piece
 Hinges to create a 65°–130° angle



NOT FAMILIAR WITH SAUERMANN PRODUCTS?

For more than 20 years, Sauermann has been a global market leader in designing, manufacturing and selling condensate removal pumps (and related finishing equipment) intended for refrigeration, air conditioning and heating systems.

Today, as an internationally recognized brand, the Sauermann Group employs hundreds of people around the world. Sauermann has an unwavering focus on product innovation and the needs of its clients – OEMs, distributors and HVAC installers.

In addition to producing affordable, quality products for detecting, evacuating and managing condensate water, the Sauermann Group believes it has a duty to anticipate its human and environmental impacts. For this reason, Sauermann has set itself concrete objectives with a view of participating in a better ecological future for its consumers and ultimately, the world.

